



Debussy / Claude / 1862-1918 / 0220. L'isle joyeuse / Claude Debussy. 1924.

1/ Les contenus accessibles sur le site Gallica sont pour la plupart des reproductions numériques d'oeuvres tombées dans le domaine public provenant des collections de la BnF. Leur réutilisation s'inscrit dans le cadre de la loi n°78-753 du 17 juillet 1978 :

*La réutilisation non commerciale de ces contenus est libre et gratuite dans le respect de la législation en vigueur et notamment du maintien de la mention de source.

*La réutilisation commerciale de ces contenus est payante et fait l'objet d'une licence. Est entendue par réutilisation commerciale la revente de contenus sous forme de produits élaborés ou de fourniture de service.

Cliquer [ici pour accéder aux tarifs et à la licence](#)

2/ Les contenus de Gallica sont la propriété de la BnF au sens de l'article L.2112-1 du code général de la propriété des personnes publiques.

3/ Quelques contenus sont soumis à un régime de réutilisation particulier. Il s'agit :

*des reproductions de documents protégés par un droit d'auteur appartenant à un tiers. Ces documents ne peuvent être réutilisés, sauf dans le cadre de la copie privée, sans l'autorisation préalable du titulaire des droits.

*des reproductions de documents conservés dans les bibliothèques ou autres institutions partenaires. Ceux-ci sont signalés par la mention Source gallica.BnF.fr / Bibliothèque municipale de ... (ou autre partenaire). L'utilisateur est invité à s'informer auprès de ces bibliothèques de leurs conditions de réutilisation.

4/ Gallica constitue une base de données, dont la BnF est le producteur, protégée au sens des articles L341-1 et suivants du code de la propriété intellectuelle.

5/ Les présentes conditions d'utilisation des contenus de Gallica sont régies par la loi française. En cas de réutilisation prévue dans un autre pays, il appartient à chaque utilisateur de vérifier la conformité de son projet avec le droit de ce pays.

6/ L'utilisateur s'engage à respecter les présentes conditions d'utilisation ainsi que la législation en vigueur, notamment en matière de propriété intellectuelle. En cas de non respect de ces dispositions, il est notamment passible d'une amende prévue par la loi du 17 juillet 1978.

7/ Pour obtenir un document de Gallica en haute définition, contacter reutilisation@bnf.fr.

MS. 977

PIANO
MS. 977

fol. 127

or Strasser
Johann in - 182
in No 126
Messrs de Paris
J. & Co. 1844

C. 1924

L'isle joyeuse



(D)

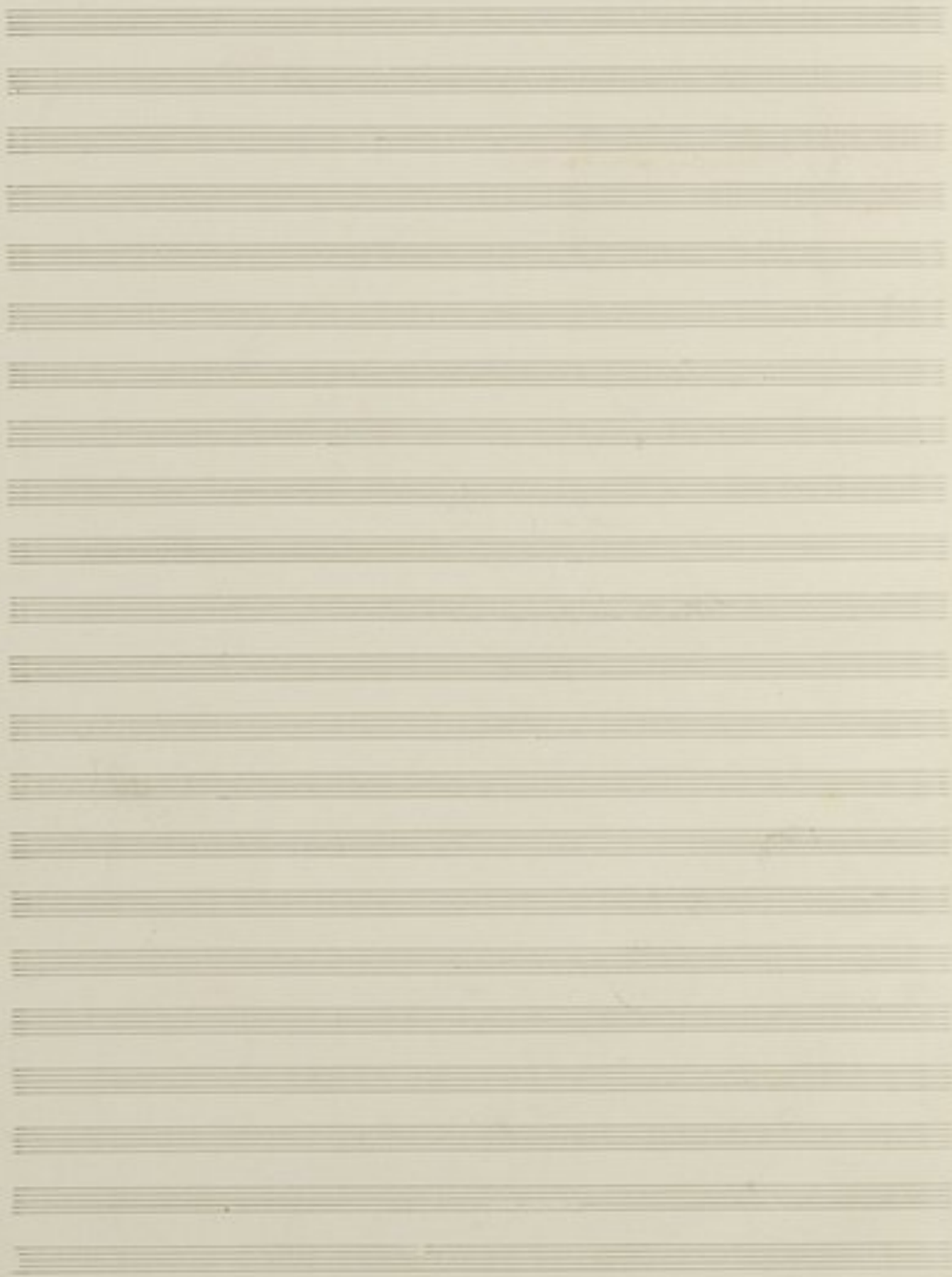


Lot D-F 6446

Copyright of A. Durand & Co 1904

MS. 977

Felix Chaminade





L'isle Joyeuse.

Quasi una danza.

Piano

Handwritten musical notation for the first system, featuring treble and bass staves with notes and rests.

Handwritten musical notation for the second system, including treble and bass staves with various musical symbols.

Tanto: Moderato et non troppo

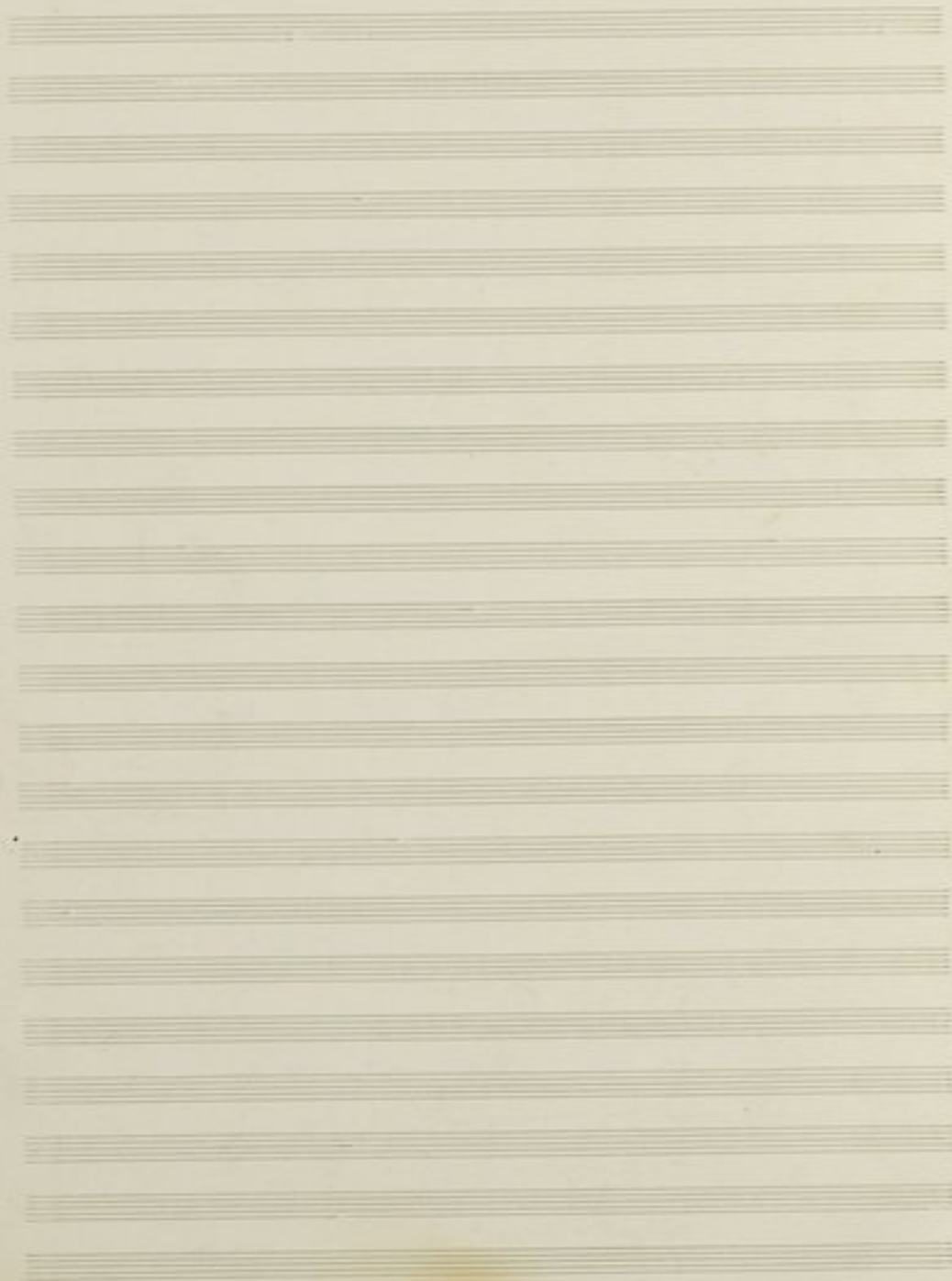
Handwritten musical notation for the third system, with treble and bass staves and a '1' at the end.

Handwritten musical notation for the fourth system, showing treble and bass staves with notes and rests.

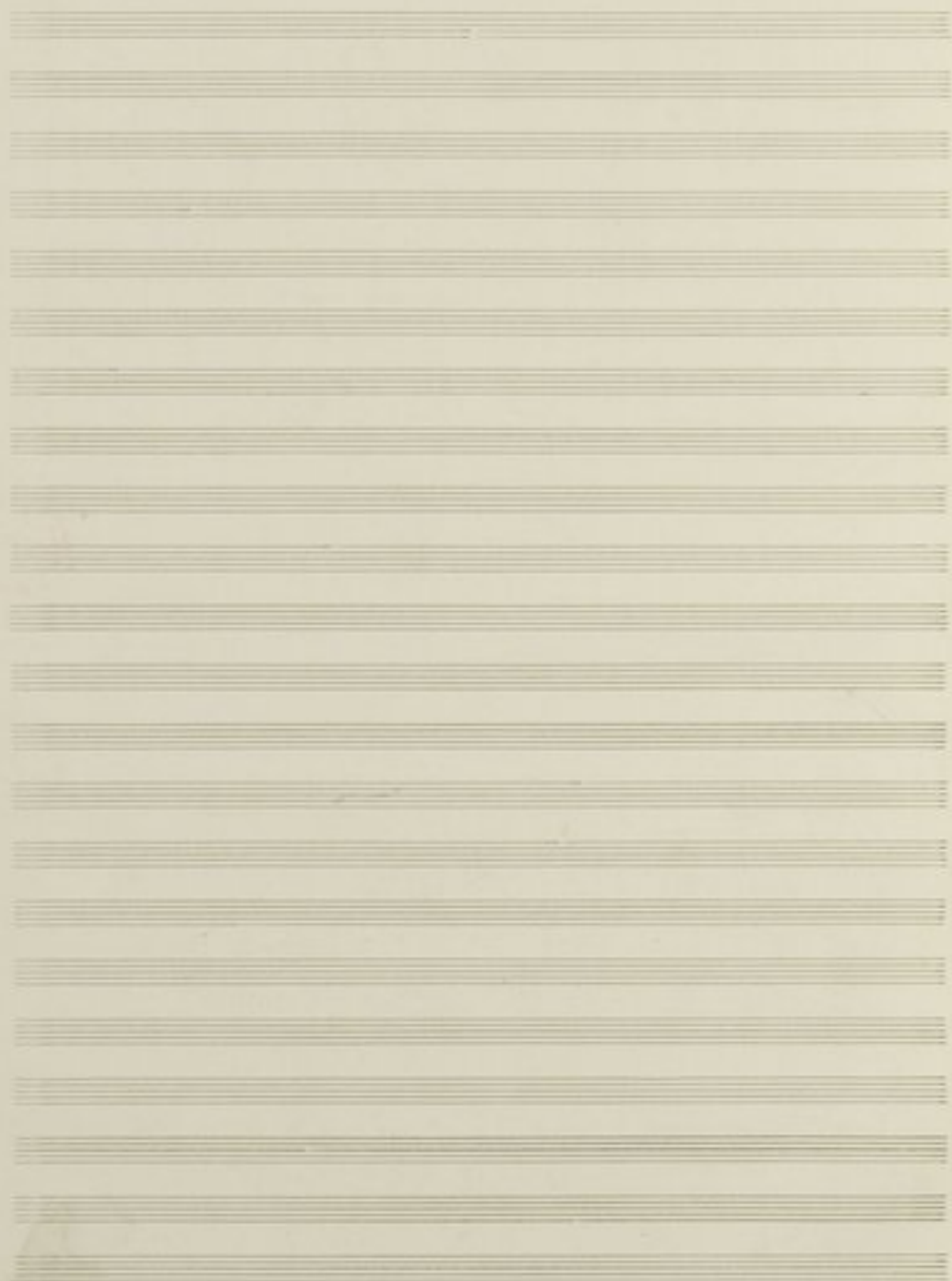
rit. ... Tambora

Handwritten musical notation for the fifth system, including treble and bass staves with notes and rests.

Handwritten musical notation for the sixth system, featuring treble and bass staves with notes and rests.







Handwritten musical notation on a single staff, featuring a treble clef, a key signature of one sharp (F#), and a 4/4 time signature. The notation includes various rhythmic values and dynamic markings.

Handwritten musical notation on a single staff, featuring a treble clef, a key signature of one sharp (F#), and a 4/4 time signature. The notation includes various rhythmic values and dynamic markings.

(2.) Upon Cello. Molto Rubato.

Handwritten musical notation on a single staff, featuring a treble clef, a key signature of one sharp (F#), and a 3/2 time signature. The notation includes various rhythmic values and dynamic markings.

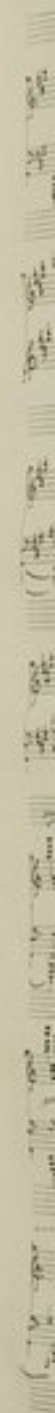


Handwritten musical notation on a single staff, featuring a treble clef, a key signature of one sharp (F#), and a 4/4 time signature. The notation includes various rhythmic values and dynamic markings.

Handwritten musical notation on a single staff, featuring a treble clef, a key signature of one sharp (F#), and a 4/4 time signature. The notation includes various rhythmic values and dynamic markings.

Handwritten musical notation on a single staff, featuring a treble clef, a key signature of one sharp (F#), and a 4/4 time signature. The notation includes various rhythmic values and dynamic markings.

Handwritten musical notation on a single staff, featuring a treble clef, a key signature of one sharp (F#), and a 4/4 time signature. The notation includes various rhythmic values and dynamic markings.



Handwritten musical score consisting of seven systems of two staves each. The notation includes treble and bass clefs, various note values, rests, and dynamic markings. The score is written in a cursive, handwritten style.

System 1: Treble clef, 2/4 time signature. Includes a "Trasposizione" marking above the staff. The first measure has a "10" written below it.

System 2: Treble clef, 2/4 time signature. The first measure has a "10" written below it. The system ends with a "2" written below the staff.

System 3: Treble clef, 2/4 time signature. The first measure has a "10" written below it.

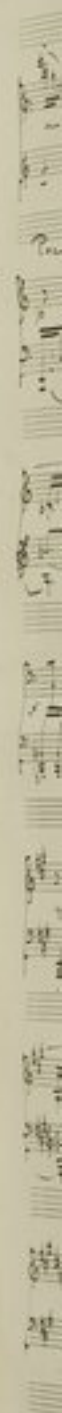
System 4: Treble clef, 2/4 time signature. The first measure has a "10" written below it.

System 5: Treble clef, 2/4 time signature. The first measure has a "10" written below it. The system ends with a "10/7" written below the staff.

System 6: Treble clef, 2/4 time signature. The first measure has a "10" written below it. The system ends with a "2" written below the staff.

System 7: Treble clef, 2/4 time signature. The first measure has a "10" written below it. The system ends with a "6" written below the staff.





Handwritten musical score system 1, featuring a treble and bass staff with complex rhythmic patterns and dynamic markings.

Poco a poco Andante da molto meno.

Handwritten musical score system 2, continuing the piece with a treble and bass staff, including a fermata over the final measure.

Handwritten musical score system 3, featuring a treble and bass staff with a 'diminuendo' marking and a fermata.

Poco animato

Handwritten musical score system 4, featuring a treble and bass staff with a 'Poco animato' marking and a red circular stamp on the right side.



Handwritten musical score system 5, featuring a treble and bass staff with a fermata over the final measure.

Handwritten musical score system 6, featuring a treble and bass staff with a fermata over the final measure.

Handwritten musical score system 7, featuring a treble and bass staff with a fermata over the final measure.



Handwritten musical notation for the first system, featuring a treble and bass clef with various notes and rests.

Handwritten musical notation for the second system, including a 'p' dynamic marking and a '10' measure marker.

Handwritten musical notation for the third system, showing complex rhythmic patterns.

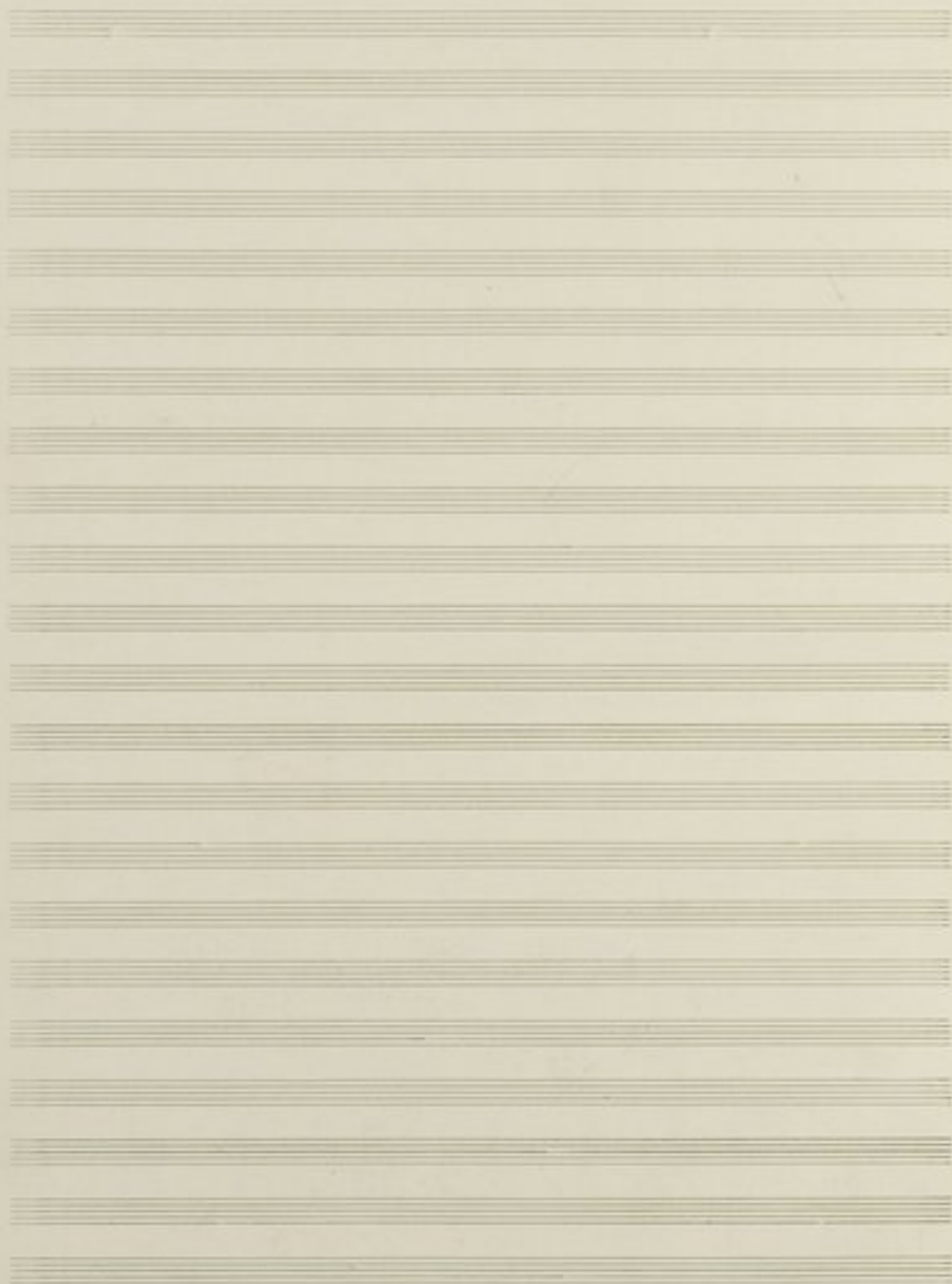


Handwritten musical notation for the fourth system, with a '6' measure marker.

Handwritten musical notation for the fifth system, with a '10/11' measure marker.

Handwritten musical notation for the sixth system, showing melodic lines.

Handwritten musical notation for the seventh system, including the instruction 'Una per Guitto'.



Handwritten musical notation on a single staff, featuring a treble clef, a key signature of one flat, and a 4/4 time signature. The notation includes several measures of music with notes and rests. A large bracket spans the first two measures. Below the staff, there are numbers 1 through 8, with an '8' centered under the 4th measure. To the right of the staff, the fraction 10/12 is written.

Handwritten musical notation on a single staff, featuring a treble clef, a key signature of one flat, and a 4/4 time signature. The notation includes several measures of music with notes and rests. A large bracket spans the first two measures. Below the staff, there are numbers 1 through 8, with an '8' centered under the 4th measure. To the right of the staff, the fraction 10/12 is written.

Handwritten musical notation on a single staff, featuring a treble clef, a key signature of one flat, and a 4/4 time signature. The notation includes several measures of music with notes and rests. A large bracket spans the first two measures. Below the staff, there are numbers 1 through 8, with an '8' centered under the 4th measure. To the right of the staff, the fraction 10/12 is written.

Handwritten musical notation on a single staff, featuring a treble clef, a key signature of one flat, and a 4/4 time signature. The notation includes several measures of music with notes and rests. A large bracket spans the first two measures. Below the staff, there are numbers 1 through 8, with an '8' centered under the 4th measure. To the right of the staff, the fraction 10/13 is written.





Fragment of text from the adjacent page, visible on the left edge of the image.



